

# Model 5AG-ES by



## HIGH CAPACITY "GREEN" MACHINE



*Model 5AG-ES*

**ENERGY STAR  
RATED AT  
LESS THAN  
1 GALLON PER RACK**

**Double Duty Model. Features  
20 1/2" door opening, air-gap  
fill, dual screening. Washes  
74 racks per hour with two  
powerful 1 HP Pumps.**

**Wash Sheet Pans Horizontally with  
the optional Pan Rack**



At American Dish Service, Quality People, Designs, and Products have been the foundations of our organization for over *45 years*.

[www.americandish.com](http://www.americandish.com)



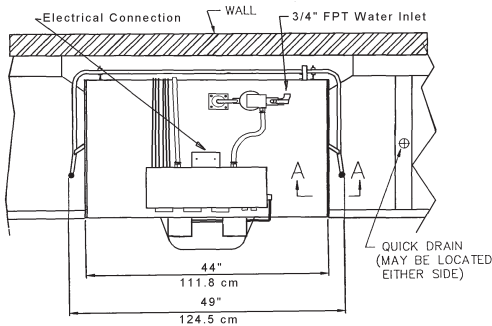
**American Dish Service**  
*Manufacturers of Ware Washing Equipment*

900 Blake Street Edwardsville, KS 66111-3820 **Toll Free (800) 922-2178 Phone (913) 422-3700 Fax (913) 422-6630**

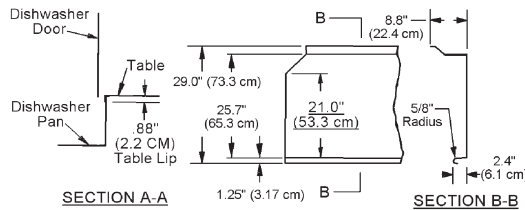
# Model 5AG-ES

**SAME GREAT QUALITY  
SAME GREAT RESULTS  
JUST LESS WATER, ENERGY,  
& CHEMICALS**

- Cleans 74 racks per hour
- Water consumption of LESS than 1 gallon per rack
- Great door clearance at 20 1/2"
- Top mount controls with auto start
- Stainless steel air gap
- Quick release spray arms
- Two high capacity 1 HP pumps
- Door safety switch - external prime switches
- Delime switch located in the control panel



TOP VIEW

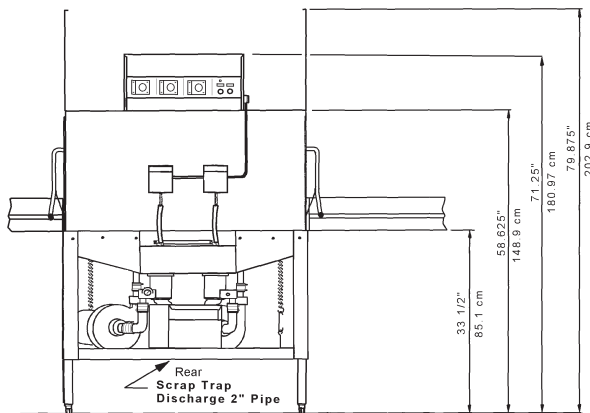


TOP VIEW  
TYPICAL TABLE DETAILS

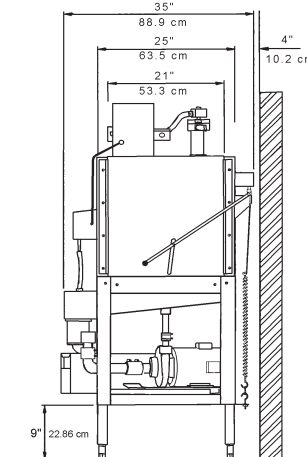
**CAUTION:**  
Electrical and plumbing connections should be made by a qualified Service Person who will comply with all available federal, state, and local Health, Electrical, Plumbing, and Safety codes.



## Model 5AGES Specifications



FRONT VIEW



SIDE VIEW

RATED CAPACITY (Racks Per Hour)	74	56	46
WASH TIME (Sec.)	50	60	75
RINSE TIME (Sec.)	7	46	60
DWELL (Sec.)	7	15	15
TOTAL CYCLE TIME (Sec.)	90	120	150

WASH TANK CAPACITY (Min.)	1.78 Gallons
WATER TEMPERATURE	120 Deg. F Min. 49 Deg. C Min.
WATER CONSUMPTION	1.78 Gallons Per Cycle 6.74 Liters Per Cycle
MOTOR (2)	1.0 HP .75 KW
ELECTRICAL RATINGS	115 Volts 18 Amp Single Phase

**CONNECT TO ELECTRICAL SUPPLY SOURCE**  
Using 10-8 AWG Copper Wire  
Circuit Protection: 30 AMP Circuit Breaker  
or Fuse with a 30 AMP Rating

RACK SIZE (2)	19 3/4" x 19 3/4" 50.2 x 50.2 cm
DOOR CLEARANCE	20 1/2" x 21" 52.07 x 53 cm
WATER INLET	3/4" FPT
DRAIN (Scrap Trap)	2" Pipe
HEIGHT (Doors Open)	79.875"
HEIGHT (Doors Closed)	71.25"
WIDTH (Overall)	49"
DEPTH (Overall)	124.5 cm
SHIPPING WEIGHT	428 Lbs. 194.1 kg
SHIPPING DIMENSIONS	60" L x 36" W x 78" H 152.4 cm x 91.4 cm x 198.1 cm

**NOTE:**  
\*Manufacturer reserves the right to modify these specifications in compliance with regulatory agencies and manufacturing expediency

Effective: 3/2011

© 3/2011

**WARNING:** Cancer and Reproductive Harm - [www.P65Warnings.ca.gov](http://www.P65Warnings.ca.gov)

900 Blake Street Edwardsville, KS 66111-3820

ADS has built a strong history based on Customer Service, Quality and Reliability.  
A Commitment to Excellence is the driving force behind American Dish Service.

Toll Free

Phone

Fax

(800) 922-2178 (913) 422-3700 (913) 422-6630